

# Automation Systems



## **INTELLIGENT** automation systems for forest machines

User-friendly  
TimberMatic™  
H-12 and F-12  
CommandCenter™

Unique  
TimberLink™

Easy-to-use  
TimberNavi™

Enhanced  
JDLINK™  
Remote  
Support

# Smart forestry

John Deere intelligent, user-friendly, and reliable measuring, control, and communications systems help you take full advantage of your forestry machine fleet. All features are designed with a clear goal in mind: to make your business as productive as possible.



## TimberMatic™ CommandCenter™

Dependable and user-friendly control systems for E-Series Forest Machines.



## TimberLink™

Unique solution for monitoring machine performance, fuel economy, and condition.



### TimberNavi™

Geographic Information System (GIS) with real-time position and other map data.



### Remote Support

Allows certified John Deere service dealer to create a link to the machine's control system.



### JDLink™

Remote monitoring system that enables connecting to the machine from your office PC or smart phone.



# TimberMatic™

## A USER-FRIENDLY AND DEPENDABLE CONTROL SYSTEM

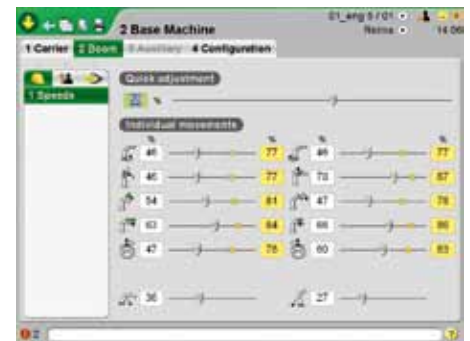
TimberMatic H-12 and F-12 are user-friendly and reliable control systems for E-Series machines. Changing between harvesters and forwarders has never been simpler, and the keypads and other control devices are now almost identical in both types of machine.

**TimberMatic H-12** is a control system for E-Series Harvesters. Control of the base machine, measuring systems, and harvesting head are integrated into the same user interface. Pressure sensors enable you to adjust most harvester settings from inside the cabin: now you are able to adjust work and transmission pump pressures, delimiting knives, and feed roller arms without tools.

**TimberMatic F-12** is the control system for E-Series Forwarders. Control of the base machine and the weight scale measuring system are integrated into the same user interface. The user interface in both H-12 and F-12 is configurable in order to allow every operator to work according to personal preference.

The TimberMatic system has a number of features to help maximize productivity, including shortcut keys for often-used functions, operator-specific settings, and interactive menus. It has also an electronic user manual for the control system that opens to the right page on your computer screen. The inclination indicator is another good example of a new feature that helps the operator in his daily work.

With the help of the PC simulator, you are able to become familiar with the features of TimberMatic in the comfort of your home or office before getting your harvester or forwarder head dirty on the jobsite.



### TimberMatic features

- Easy-to-use integrated and configurable user interface
- Personalized operator settings
- Shortcut keys for often-used functions
- Onboard electronic manual
- StanForD 2010 support

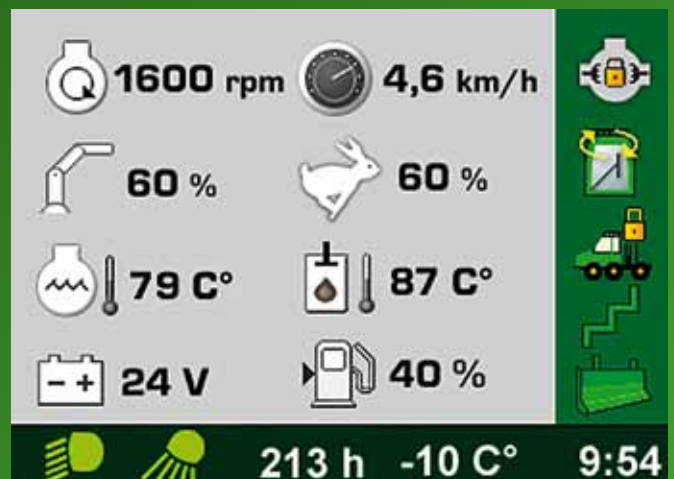


## BE IN COMMAND WITH CommandCenter™

CommandCenter is a basic control system with a clear, easy-to-use interface for E-Series Forwarders. An alternative for use without a PC, CommandCenter enables the most important forwarder adjustments.

CommandCenter is designed for environments where user-specific settings are not required and where data transmission, maps, or forestry company applications are not required.

The wireless John Deere boom scale requires a PC and is not functional with CommandCenter.



# STAY UP-TO-DATE WITH TimberLink™

TimberLink is a forest machine performance- and condition-monitoring system that helps forestry contractors, machine operators, and service staff in the maintenance and improvement of machine productivity, fuel efficiency, and utilization rates.

TimberLink allows machine performance to be monitored during normal operation on a harvesting site. The operator can also make adjustments to machine settings in order to optimize performance with the conditions of a specific site in mind.

As it collects and processes data on machine condition and performance, TimberLink becomes a powerful tool for preventive maintenance.



## TimberLink features

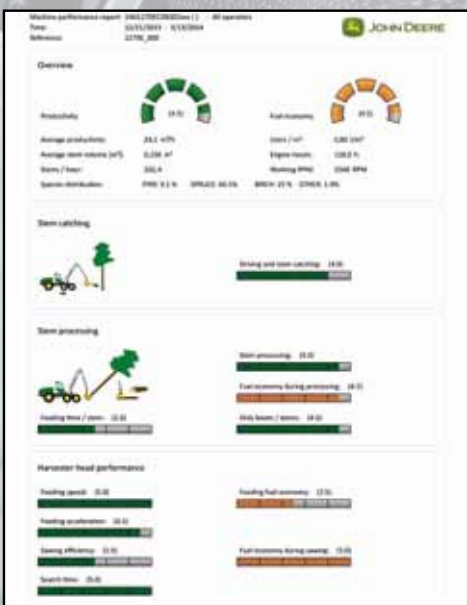
- Quick summary of machine performance and fuel consumption via TimberLink Overview display
- TimberLink Overview display standard in all E-Series Harvesters and Forwarders
- TimberLink H in harvesters
- TimberLink F in forwarders
- TimberLink data can be analyzed in the office by TimberOffice 5 software
- Speeds up troubleshooting



TimberLink H provides top-of-the-line measuring results from harvester operations. Generous processing time and high processing productivity are prerequisites for good productivity  $m^3/h$  and low fuel consumption (l/h).



TimberLink F is a tool for monitoring forwarder performance by work stage: Driving empty, loading, driving loaded, and unloading.



From the TimberLink machine-performance report, you can clearly see harvester productivity, fuel consumption, and technical condition in comparison with other machines working under similar conditions.

TimberLink data can be analyzed in the office by TimberOffice 5. TimberLink includes several displays giving detailed information on work cycles and stages.



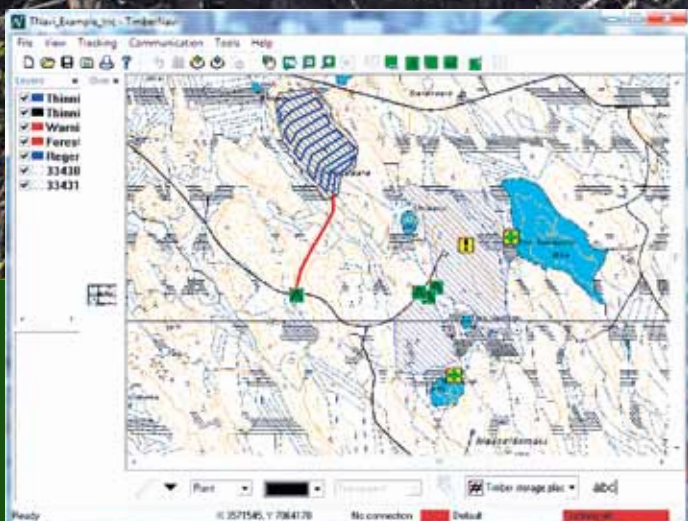
# DON'T GET LOST — GET TimberNavi™

TimberNavi is a Geographic Information System (GIS) that uses Global Positioning System (GPS). With TimberNavi, the machine operator can see machine position on a computer display, along with other map information such as terrain conditions and harvesting areas, in real time.

TimberNavi can be used in harvesters and forwarders in the woods, and also in the office. TimberNavi shows the operator machine position on a digital map, and the system also reflects changing map conditions.

From the office the machine operator or wood-procurement manager can add important information as an additional layer on the TimberNavi map. This information could include, for example, symbols such as key biotopes, power lines, stand borders, tracks, stacks of crosscut logs, timber-storage areas, etc.

TimberNavi is available in Professional and Logistics versions.





# FASTER AND EASIER MAINTENANCE BY REMOTE DISPLAY ACCESS

Remote Display Access is a system that allows a certified John Deere service dealer to create a link to your machine's TimberMatic measuring and control system. Remote Display Access facilitates maintenance, and also speeds up troubleshooting, if problems happen to occur in the functioning of your machine.

With **Remote Display Access** you are able to increase machine uptime and decrease the need for service technician trips to the site. This saves both time and money.

The Remote Display Access system ensures the most efficient functioning of your machine in every condition. It is easy and secure to use, since it uses the same data-transfer system as JDLink.



MODULAR TELEMATICS GATEWAY  
(MTG) CONTROLLER



CELLULAR



REMOTE  
DISPLAY  
ACCESS

# NOW EVEN SMARTER MACHINE MONITORING WITH JDLink™

The JDLink™ remote monitoring system gives real-time alerts and information about Machine location, usage, productivity (m<sup>3</sup>/h), fuel consumption, and maintenance need either on the office computer, tablet, or smart phone.

The JDLink system helps make forestry business operations more competitive and profitable. The JDLink machine- and fleet-management solution is a telematics system designed to remotely connect machine owners and managers as well as service personnel to their forest equipment from their office PC.

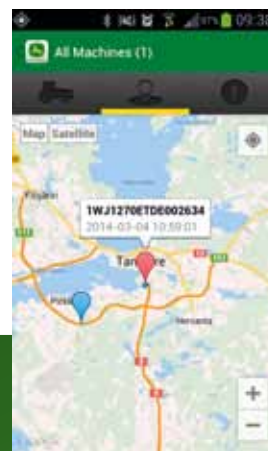
The system enables real-time alerts and machine information, such as location, utilization, productivity, fuel consumption, and maintenance data, to make decisions easy and fast, and to optimize machine operations.



Machines can be shown in groups, individually, or all at the same time for comparison. Machine information can also be sorted by a date and time range, or by an engine-hour range. The JDLink machine- and fleet-management solution available for John Deere EPA Interim Tier 4 (IT4)/EU Stage IIIB forestry machines. A JDLink installation kit is available for older E-Series machines.

## JDLink features

- Forest machine remote monitoring system
- First three years of use are free of charge
- Available via both web and mobile devices
- New features:
  - Productivity in m<sup>3</sup>/h
  - Active site production
  - Fuel consumption in l/m<sup>3</sup>
  - Work time utilization
  - Automatic data transfer for TimberOffice 5
  - More precise forestry machine productivity and fuel analyses per site and operator are made using the TimberOffice 5 machine fleet monitoring system.




iPhone and Android applications display the most essential JDLink information in seven-day intervals.



MODULAR TELEMATICS GATEWAY (MTG) CONTROLLER





## The leading provider of advanced harvesting solutions and services

Our ambition is to offer innovative solutions to make your work more productive, efficient, and easy. We are dedicated to being a long-term partner for our customers. Our wide distribution network offers professional support and services to customers worldwide.

**Nothing Runs Like a Deere™**



**JOHN DEERE**

This brochure has been compiled for worldwide circulation. While general information, pictures, and descriptions are provided, some illustrations and text may include options and accessories not available in all regions. For more information, please contact your local John Deere dealer. John Deere reserves the right to change specifications and design for products in this brochure without notification. John Deere is not liable for any possible errors or omissions in this brochure.